

PERMANENT SAMPLE PLOTS

First measurements of PSP in year: **1972**

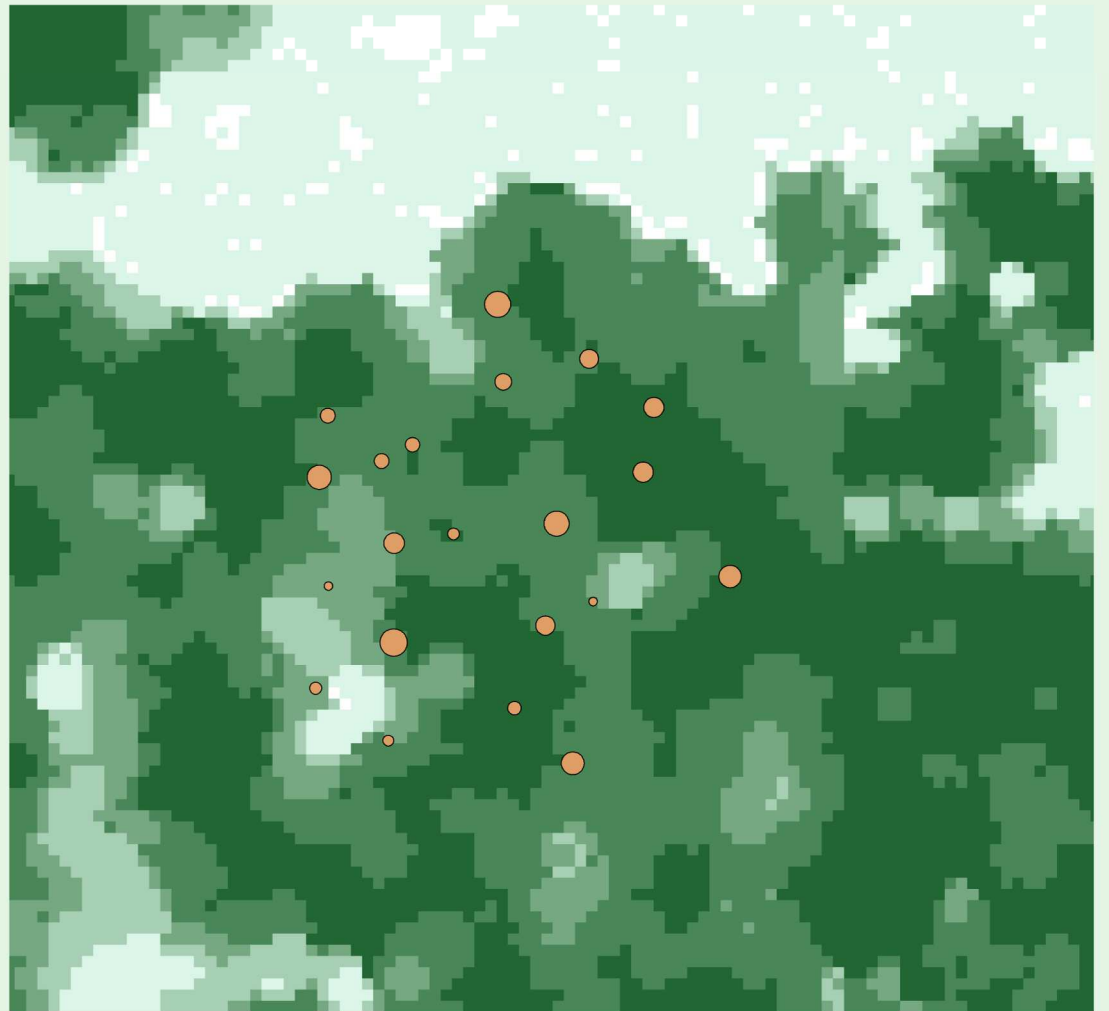
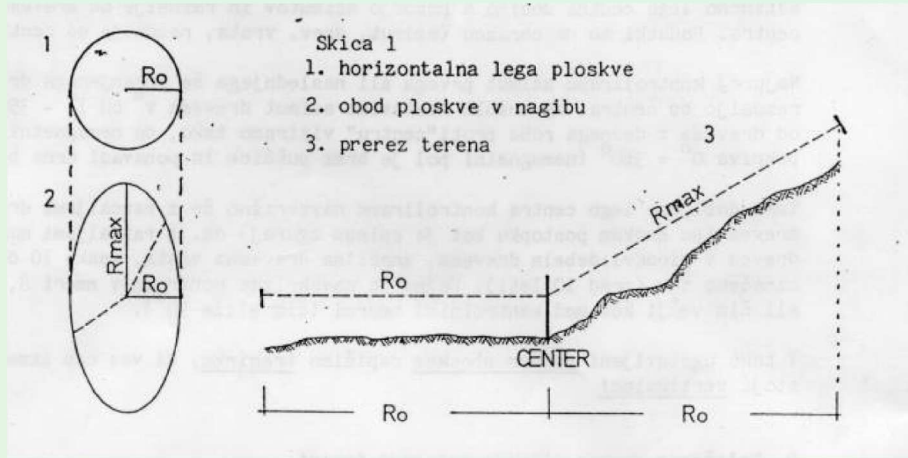
Plots on test area:

first measurement: **1978**,
last conducted: **2008**,
next: **2018** (fifth measurement);

$R_0 = 11.3\text{m}$;

trees above 10cm DBH

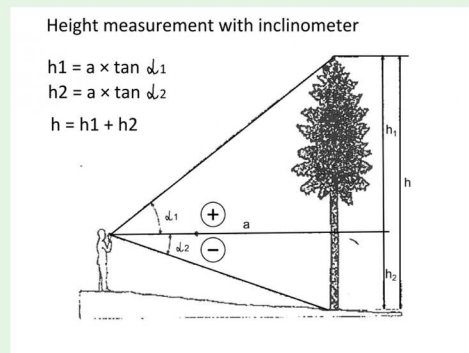
Plot shape in reference to slope



Data per single tree

Azimuth;
Distance from the centre of plot;
Specie;
Diameter in breast height;
Social position;
Vitality;
Damages of trunk and crown;
Defoliation;
Technical quality of trunk;
changes according to the measurement from 10 years ago.

Height;



Data per one PSP

Date;
Name;
Notes;
X and Y coordiante;
Elevation;
Slope;

Rmax;
Position in the landscape;
Celestial position;
Determination of stand type:
developmental phase,
mixture of tree species and
crown density;
Dead trees lying - dead biomass.

